



2022-2023

ANNUAL REPORT



[Clarematrix.org](https://clarematrix.org)



ADMISSIONS
866.452.5273



ADMINISTRATIVE
310.314.6200



ADDRESS
909 Pico Boulevard
Santa Monica, CA 90405

“CLARE | MATRIX gave me hope when I needed it the most. The support I received here transformed my life. They don't just treat the substance use; they treat people with compassion and dignity.”

-Program Participant



CONTINUING OUR LEGACY OF SERVICE

A MESSAGE FROM THE EXECUTIVE DIRECTOR



Dear Friends, Donors, and Community Members:

For over 50 years, CLARE|MATRIX has served those struggling with alcohol and substance use disorders on LA's Westside. I am pleased to say that the legacy of hope, compassion, and treatment continues despite changing times and new challenges, thanks to the dedication of the CLARE|MATRIX team and the support of our partners and donors, like you!

In April 2023, I was asked to rejoin CLARE|MATRIX as the Executive Director. I am grateful and humbled to be back with an organization that was pivotal in my personal journey. As an active member of the LA recovery community, I have been an avid supporter of CLARE|MATRIX's mission for the last two decades, including the privilege of serving as a board member from 2008 through 2019. During this period, I watched the organization navigate the changing, and at times difficult, treatment environment. The opioid/fentanyl tidal wave, changing treatment models, and the COVID-19 pandemic all required CLARE|MATRIX to respond, adapt and make tough choices.

I'm proud to tell you that CLARE|MATRIX's unwavering commitment to ***Saving Lives Through Recovery*** has never been more important than it is now. CLARE|MATRIX has been faced with making difficult choices for the betterment of the organization with a goal to serve another 50 years of treatment to those that need it most. These decisions have included certain programs being consolidated or curtailed, facilities being realigned to support institutional goals better, and the staffing structure being reorganized to improve both its efficiency and effectiveness.

Happily, the benefits of these decisions are beginning to show. CLARE|MATRIX has emerged with a mix of programs that serve the greater needs of the community. Thanks to the determination and professionalism of its staff, CLARE|MATRIX has maintained its commitment to providing those most in need with effective and compassionate care.

As will be seen from the results in the following report, CLARE|MATRIX's financial and operations performance measures have improved against both external and internal standards. Rightsizing has brought operating losses near breakeven. Facilities and staff utilization have increased substantially. The re-opening of the Opioid Treatment Program (OTP) at 5220 Washington Blvd. after three years of suspended operations due to a fire not only brings this critical resource back to the community but also restores a major recurring revenue stream. In addition, the organization has successfully secured several large multi-year grants from City, State, and Federal agencies that can provide continuity for ongoing and future operations.

We're anxious to reengage with our partners, stakeholders and donors who have made CLARE|MATRIX's astonishing 50+ years of ***Saving Lives Through Recovery*** possible. With big changes on the horizon, we need your assistance in meeting our day-to-day service commitments and helping us plan to relocate our facilities in 2025. More information about the capital campaign for 2025 will be provided in the near future.

With your support, we believe that we are at the start of the next 50 years of CLARE|MATRIX's service to those most in need. Both I and our Director of Development, Shireen Ossanlo, look forward to meeting you in the future. Please do not hesitate to reach out to either Shireen or me with your comments, questions and suggestions.

Respectfully,

A handwritten signature in black ink, reading "Steve Glick". The signature is fluid and cursive, with the first name "Steve" and last name "Glick" clearly distinguishable.

Steve Glick
Executive Director



ABOUT CLARE | MATRIX



MISSION

CLARE | MATRIX saves lives by providing compassionate, evidence-based treatment for those who struggle with drugs, alcohol and related behavioral health challenges. We strive to enhance the field of treatment worldwide through education, research and training.

VISION

No life lost to alcohol and substance use disorder.



CLARE | MATRIX

CORE VALUES



COMPASSION

TEAMWORK

INTEGRITY

EMPOWERMENT

ADAPTABILITY

EQUALITY

ABOUT CLARE | MATRIX

OUR SERVICES

CLARE|MATRIX is recognized as a leading, evidence-based practitioner in the substance use disorder (SUD) and behavioral health field with three interrelated programs:

- a SUD continuum of care treatment model
- a research and treatment innovation unit
- and a training program that educates governments and professionals around the world.

We take pride in offering a comprehensive continuum of care, tailored to the unique needs of each individual seeking our services. At the heart of our organization are two residential treatment programs, which serve as a vital component within our continuum. These programs form the foundation of our commitment to providing evidence-based clinical, holistic, and preventative care at every level of treatment. In addition to our residential offerings, we extend our support across various levels of care, including Prevention, Recovery Bridge Housing, Outpatient Programs, Opioid Treatment Program, and Youth services. Notably, our continuum underscores our dedication to delivering evidence-based and holistic care throughout every stage of our treatment model. It's this holistic approach and complete range of services that define our organization's strength.

Our programs include:

- Matrix Model Treatment for Outpatient and Residential Settings
- Medication Assisted Treatment
- 12-Step Practices and other self help groups including Smart Recovery
- Other evidence-based interventions including the provision of Contingency Management, Cognitive Behavioral Therapy and Motivational Interviewing.

100,000+

**MORE THAN 100,000 PEOPLE
HAVE RECLAIMED THEIR
LIVES THROUGH OUR
PROGRAMS**





OPIOID OVERDOSE PREVENTION AND RESPONSE



The county of Los Angeles implemented a new project aimed at increasing the ability of the agencies in its network to provide overdose prevention and education services to the people they serve. SAPC selected CLARE | MATRIX as one of the provider agencies for this project to provide technical assistance and overdose response training to other Los Angeles County Drug Medi-Cal providers. The project involves Overdose Prevention and Response Training and Technical Assistance to support organizations in offering effective overdose prevention education and distributing overdose prevention kits.

Services Include:

- a standardized overdose prevention training curriculum
- technical assistance for promoting harm reduction-based overdose prevention
- other services as specified by the County, including assistance with the Naloxone Distribution Project

\$1,000,000

AWARDED FOR THE 22-23 FISCAL YEAR

\$800,000

RENEWAL FOR THE 23-24 FISCAL YEAR

5,244

OVERDOSE PREVENTION
KITS CONTAINING
NARCAN DISTRIBUTED

790+

MORE THAN 700 PEOPLE
TRAINED TO
ADMINISTER NARCAN

40

TOTAL PARTNER
AGENCIES



Jayson Lansford and Mignon Bell,
CLARE | MATRIX's Opioid Overdose Prevention
and Response Trainers for this project

CLARE | MATRIX's outreach initiatives have helped raise awareness about SUD and the opioid crisis, and reduce the stigma associated with it. They are a beacon of hope in our community."

- Community Member





NEW FUNDING OPPORTUNITIES



Youth Advocacy and Treatment Program

CLARE | MATRIX's Youth Advocacy and Treatment Program received new grant funding of \$450,000 to provide SUD prevention and early interventional services to transitional-age youth aged 12-24. These new programs will cover all middle and high schools in Los Angeles Service Planning Areas 5 and 6 with special emphasis on opioid use, harm reduction, and overdose prevention.



This Program Includes:

- Substance Use Disorder education and awareness
- Individual and group substance use treatment
- Medication Assisted Treatment (MAT) education and referral services
- Linkages to external community resources/services
- 12-Step introduction for teens
- Peer Support
- Opportunity to participate in sober fun activities such as art therapy and other group activities

Partner with us!

For more information, contact:
Jolan Dawson Millard
Director of Prevention Services
jdawson@clarematrix.org

City of Santa Monica, Human Service Grant Program (HSGP)



CJM has entered into a new contract with the City of Santa Monica to serve as the primary SUD treatment facility for people experiencing homelessness within the City. This program will work alongside the existing City of Santa Monica outreach teams to help eradicate barriers to treatment for unhoused populations. Initial grant funding of \$340,000 per year for up to five years, is the largest grant CJM has ever received from Santa Monica, reaffirming CJM as the leading provider of SUD services.

Over
\$1.3M

IN FUNDING ACROSS
4-YEARS SUPPORTED
BY THE CITY OF
SANTA MONICA





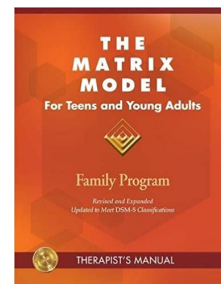
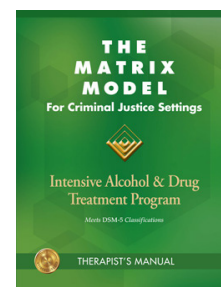
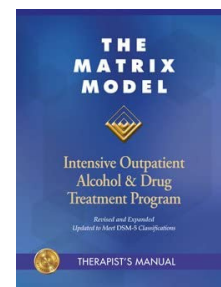
TRAINING HIGHLIGHT

SHAPING SUCCESS ONE TRAINING AT A TIME

Matrix Model training at CLARE | MATRIX is a transformative program dedicated to equipping professionals with the skills and knowledge to make a lasting impact in the field of substance use treatment. This comprehensive training is rooted in evidence-based practices and encompasses a holistic approach, drawing from cognitive-behavioral therapy, family therapy, contingency management, 12-step facilitation, and motivational enhancement therapy. Through our training, participants gain the expertise needed to effectively implement the Matrix Model, supporting individuals on their journey to recovery and wellness.

In the nonprofit realm, commitment drives transformative change. Most recently, Donna Johnson, JD, Director of Training, and her team exemplify this spirit in the following department updates:

- **Expanding Reach:** The training department recently collaborated with states like Delaware, Oklahoma, Nebraska, and Louisiana, expanding our influence.
- **Supreme Court Nods:** Nebraska and Louisiana's Supreme Courts endorse the Matrix Model, reaffirming its effectiveness.
- **Wisconsin Summit:** The Wisconsin summit marks a milestone, attracting over 1,000 attendees, reflecting the program's growing recognition.
- **Bucks Partnership:** A partnership with the Milwaukee Bucks, led by Vin Baker, aims to establish Matrix-based sites in Delaware, amplifying our impact.
- **Australian Venture:** Donna trains providers in Australia for a month.
- **Certificate of Excellence:** Our program in Victoria secures a prestigious three-year certification with excellence.
- **UCLA Collaboration:** CLARE|MATRIX aims to bridge the prescriber gap, working with UCLA Medical School and seeking to expand to more institutions.



30+

PROVIDERS FROM
MORE THAN 30
COUNTRIES HAVE
BEEN TRAINED

50

PROVIDERS FROM
ALL 50 STATES HAVE
BEEN TRAINED





QUICK FACTS



RESIDENTIAL AND OUTPATIENT PROGRAMS

697

PEOPLE SERVED ACROSS RESIDENTIAL AND
OUTPATIENT PROGRAMS

55%

REPORTED THAT THEY WERE EXPERIENCING
HOMELESSNESS UPON ADMISSION

45%

FEMALE

55%

MALE

90%

LIVING AT OR BELOW
THE POVERTY LINE

1,500+

PEOPLE SERVED ACROSS
ALL PROGRAMS



| Race / Ethnicity | Percentage |
|--------------------------------|------------|
| LatinX | 37% |
| White | 36% |
| Black/African American | 21% |
| Asian/Pacific Islander | 2% |
| American Indian/Alaskan Native | < 1% |
| Other | 3% |



COMMUNITY PARTNERS



LATLC WOMEN'S EMPOWERMENT DAY



In the spirit of community and empowerment, we were thrilled to host a Women's Empowerment Day event generously sponsored by Los Angeles Trial Lawyers Charity (LATLC)! Our exceptional staff and LATLC volunteers led this inspiring event for the women in our residential program. We had an exciting lineup, including self-defense classes that equipped our participants with vital skills, the creation of vision boards to manifest dreams, a delightful lunch, and engaging conversations about women's empowerment and what it means to each of us. This day was a celebration of strength, unity, and personal growth. Thank you, LATLC for your partnership!

HAV A SOLE

Hav A Sole is a nonprofit organization committed to supplying quality footwear to marginalized populations, aiming to promote healthier lifestyles. Their influence spans across numerous lives, as they engage in social activism, volunteer efforts, and community development. Hav A Sole's mission extends beyond footwear provision; they cultivate a sense of social responsibility among their dedicated young volunteers, inspiring active community involvement. Hav A Sole generously donated to the women and men in both residential programs to receive athletic footwear! Thank you, Hav A Sole, for being a pillar in the community and giving back to populations in need!



AMERIPRISE FINANCIAL WOMEN'S HISTORY MONTH

Ameriprise Financial generously hosted a donation drive in honor of Women's History Month to benefit the people in our residential programs! Ameriprise Financial donated women's care packages, including toiletries, socks, bras, coloring books, coffee, laundry detergent, lotions, and more! We are so grateful for their partnership and support.





FINANCIAL REVIEW



MAIN SOURCES OF REVENUE

\$10,218,863

GOVERNMENT GRANTS

\$1,636,455

FUNDRAISING

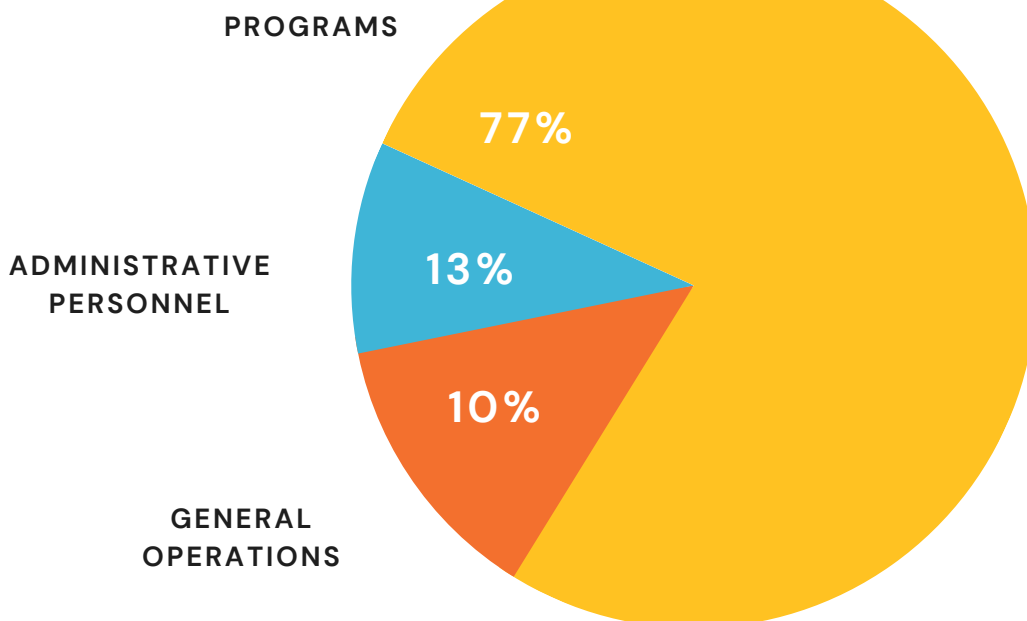
\$1,008,251

RESEARCH & TRAINING

81¢

OF EVERY DOLLAR
DONATED DIRECTLY
SUPPORTS
PROGRAMMING

COMPANY EXPENSES



*Audited Financials will be available on the website next year.



BOARD OF DIRECTORS

BOARD MEMBERS

Mark Freund, Board Chair

Andrew Besser, JD, CADC-CS

James C. Birch

John Carrick

Odat Elsey

Kevin Fahy

Deb Feinberg

Jason Giles, MD

Christine Grella, PhD

Stacy Hatch

Stanley J. Janowiak

Jeanne Obert, MFT, MSM

Melissa Sandoval, JD

69%

WITH LIVED
RECOVERY
EXPERIENCE

76%

WHITE/CAUCASIAN

8%

BLACK/AFRICAN
AMERICAN

8%

HISPANIC

8%

ASIAN OR PACIFIC
ISLANDER

46%

FEMALE BOARD
MEMBERS

54%

MALE BOARD
MEMBERS



A TRIBUTE TO DOROTHY RICHARDS



Dorothy Richards was a long-standing board member and advocate of CLARE | MATRIX and our mission to save lives through recovery. She first came to CLARE | MATRIX as a Board Member while attending the UCLA Extension program for Alcoholism Studies Program. Her AA sponsor was a CLARE Board member and suggested Dorothy consider being involved with the Board. She served from 1989 to 2020. Dorothy also served on the CLARE | MATRIX Emeritus Advisory Committee as a non-voting member, as well as on the Development and Events Committees. As a recovering woman since 1975, she found that helping those who need recovery services is the most worthwhile endeavor of her life. Her passion is to empower women through an example to get sober, stay sober, and lead beautiful lives through the blessings of recovery. Dorothy remained active as an emeritus board member until the very end and her impact continues to have an immeasurable ripple effect on the CLARE | MATRIX community as a whole.



ADMISSIONS

866.452.5273

ADMINISTRATIVE

310.314.6200

ADDRESS

909 Pico Boulevard
Santa Monica, CA 90405

Clarematrix.org